



PLYmedia Inc.  
Brightcove Plug-In  
Integration Document



## Purpose

The goal of this document is to outline and explain the process for Brightcove integration with PLYmedia's PLYviewer, as well as provide step-by-step instructions for this procedure.

## Target Audience

IT personnel, Brightcove account managers/developers, webmasters and Flash developers within companies that utilize Flash player technology and who wish to enable PLYmedia's services in streaming video to the player on their websites.

## Table of Contents

Purpose .....	2
Target Audience.....	2
Table of Contents.....	2
Overview.....	3
Step-by-Step instructions: .....	3
1. Send PLYmedia Brightcove Player IDs: .....	3
2. Build the Plug-In URL:.....	4
3. Add the Plug-In: .....	4
4. Send PLYmedia your Brightcove Read-Token .....	6
5. Order Captions/Subtitles from the Brightcove Account (Optional) .....	6



## Overview

PLYmedia's player is a transparent Flash Player created and loaded for the purpose of displaying layers (PLYS) on top of a video. The integration process creates a link between the Brightcove Player on the hosting site and PLYmedia's Flash Player, and requires the following set of actions:

- Sending PLYmedia the Brightcove Player IDs utilized by the customer.
- Loading PLYmedia's transparent player (plyViewer.swf) on top of your Brightcove player using Brightcove Custom Plug-ins.

## Step-by-Step instructions:

### 1. Send PLYmedia Brightcove Player IDs:

In order for PLYmedia to server specific content to a specific video for a specific customer, PLYmedia utilizes Brightcove unique URL per video. A Brightcove unique URL has the following structure:

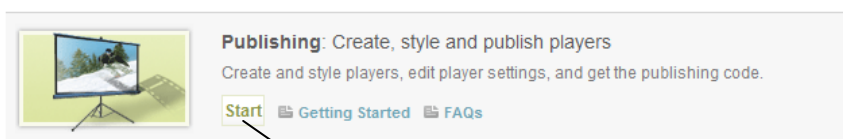
`http://link.brightcove.com/services/player/bcpid{PlayerID}?bctid={BrightcoveVideoID}`

PLYmedia uses the PlayerID value to assign the video to a customer, and the BrightcoveVideoID to assign content per video.

To enable extra features, PLYmedia must receive Player IDs in order to assign a SiteName per customer.

To get your Player ID:

- Go to the publishing section on your BrightCove account.



- Select your player from the list.

Players	Last Updated	Player ID
Single Video Player Video Player 496x412px	Jun 14 2010, 5:41PM	89358476001

**Single Video Player**  
Last Updated Jun 14 2010, 5:41PM

Selected Video Name

Default Viral Player  
Player ID 89358476001  
Status Active  
Template Video Player

iii.

- Copy the Player ID

**Note:** It is important to send all Player IDs you are going to integrate to Gal Klein ([gal@plymedia.com](mailto:gal@plymedia.com))



## 2. Build the Plug-In URL:

The plug-in URL is:

<http://static.plymedia.com/players/default/bcsubplyplugin>

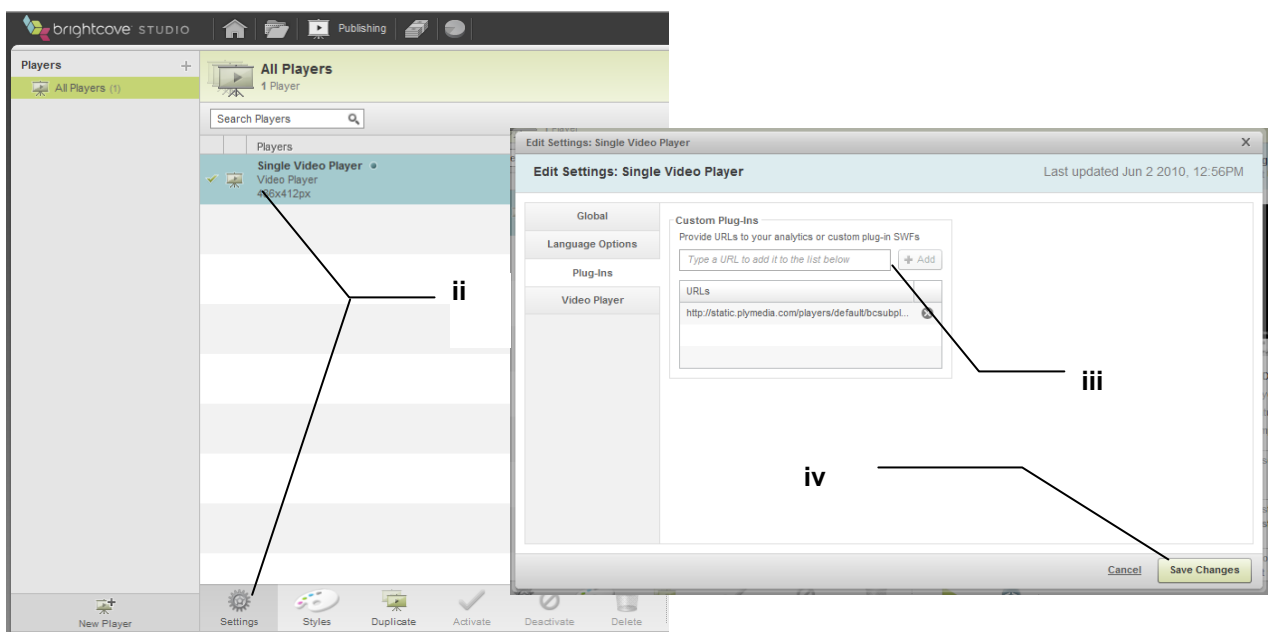
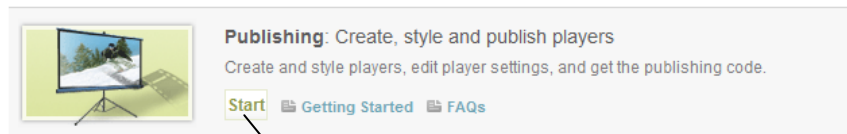
Loading the plug-in allows adding additional functionality to the PlyViewer by adding parameters as query strings:

- i. subpos – allows positioning the caption on a vertical base where 0 is top and 100 is bottom (default is 100)
- ii. DefaultSubLang – allows setting the defaulted language, for a list of options please view: <http://content.plymedia.com/PLYServiceRest/Language/GetFullList>
- iii. skin – allows setting the Caption menu UI + positioning, options are: submenu-v1 (top right corner), submenu-v2 (bottom left corner), submenu-v3 (bottom right corner), submenu-topleft
- iv. videoPlayerId (for Chromeless Control sensitive integrations only) – specify the Video Player ID as indicated in the BEML schema of your player (if you never changed the BEML the default value should be: "videoPlayer") So the plug-in URL could look like:

<http://static.plymedia.com/players/default/bcsubplyplugin.swf?subpos=100&DefaultSubLang=eng&skin=submenu-topleft&videoPlayerId=videoPlayer>

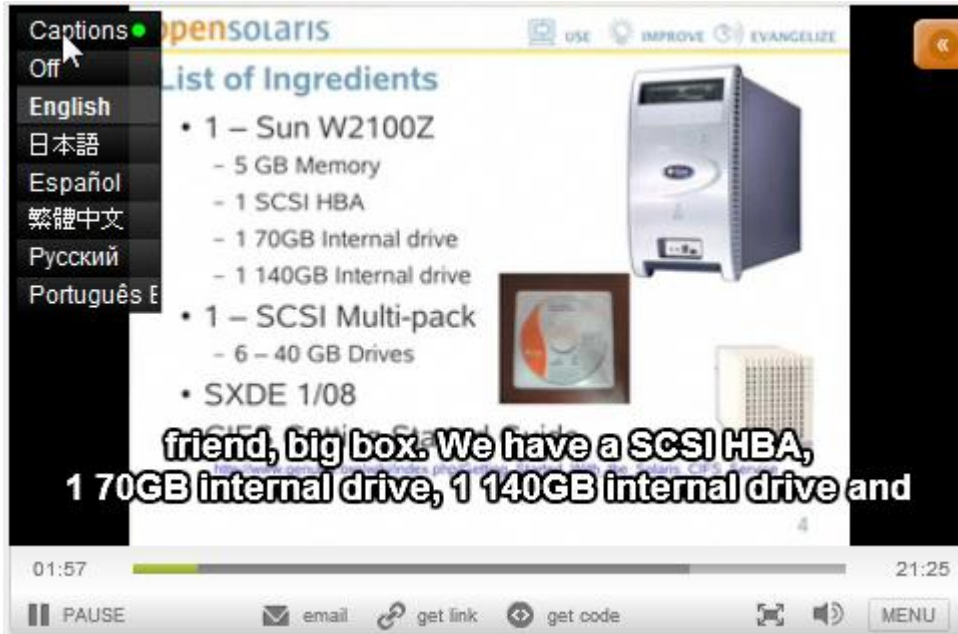
## 3. Add the Plug-In:

- i. Go to the publishing section on your BrightCove account.
- ii. Select your player and click 'Settings'
- iii. Select the Plug-Ins tab, enter the Plug-In URL and click 'Add'
- iv. Click 'Save Changes'



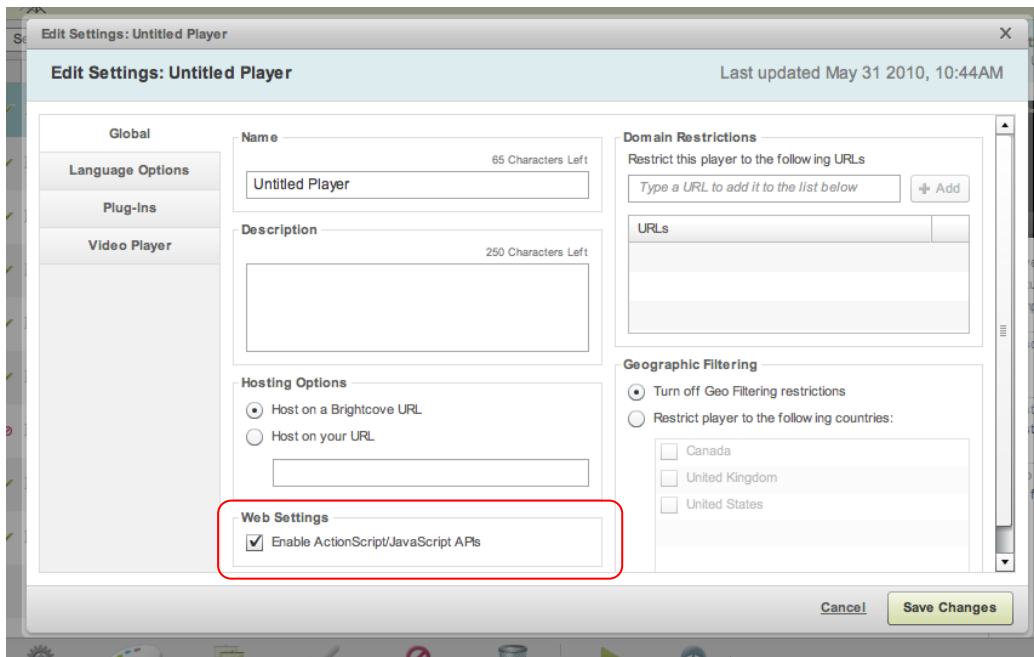


Once it is attached to your player the integration is done and you should have the Plymedia component running on your player.



### [!] Important

Make sure you enable API calls in your player, otherwise the integration will have issues communicating with the media played.



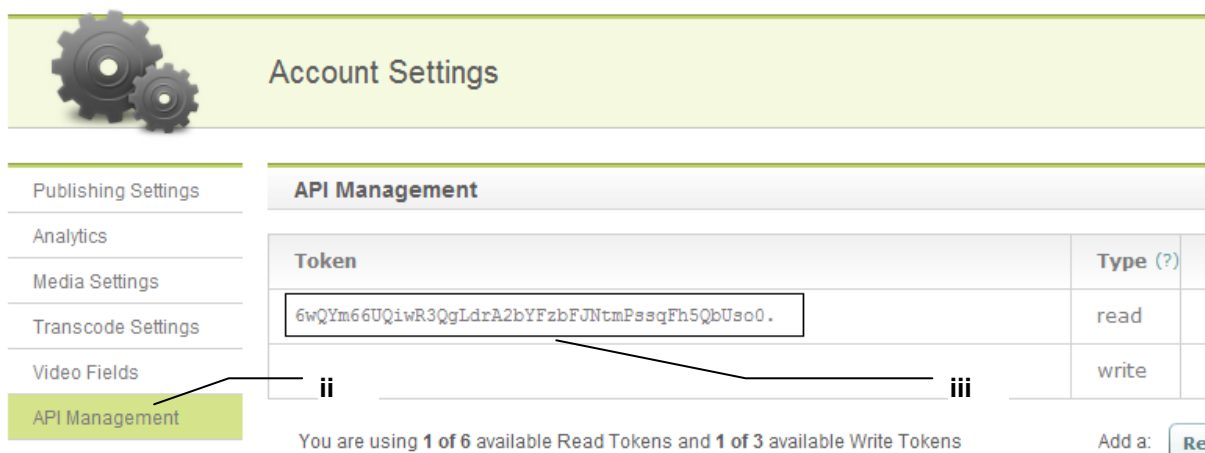


#### 4. Send PLYmedia your Brightcove Read-Token

In order for PLYmedia to be able to get Order requests directly from your Brightcove account pages and to insure support for future Brightcove updates, please send PLYmedia your Brightcove Read-Token.

To do so please follow the following steps:

- i. Go to Account Settings
- ii. Select API Management
- iii. Copy your Read Token
- iv. Send Read Token to PLYmedia



#### 5. Order Captions/Subtitles from the Brightcove Account (Optional)

PLYmedia offers the option to order Captions & subtitles directly from your Brightcove Account (Only when Step 4 has been accomplished).

To enable direct ordering please follow the following steps (one time setup):

- i. Go to Account Settings
- ii. Select Video Fields
- iii. Hit "Add Custom Fields"
- iv. In the "Display Name" enter – "Captioning"
- v. In the "Type" choose "Text"
- vi. Hit Save

To submit an Order please follow the following steps:

- vii. Go back to the Media section on your Brightcove account
- viii. Select the Media element you want to order captions to & Double click it.
- ix. Select the "Custom Fields" Tab
- x. Enter the language codes of the requested languages
- xi. Hit "Save Changes"



**Account Settings**

- Publishing Settings
- Analytics
- Media Settings
- Transcode Settings
- Video Fields**
- API Management

**Video Fields**

**Custom Fields** Fields Added: 3 Fields Remaining: 7 [Need more fields?](#) [Copy](#)

Use custom fields to store additional information about Videos in your account. [Learn More.](#) [Add Custom Fields](#)

If you need to **ii** field, please [contact customer support](#).

Display Name	Internal Name (?)	Type (?)	Values (?)

**Video Fields**

**Add Custom Fields**

Custom Fields will appear in the Media module in the order you add them below. Before you add custom fields you require for your account, as fields cannot be added or deleted once added.

Display Name (?)	Internal Name (?)	Type (?)	Values (?)
Captioning	captioning	Text	

[Save](#) or [Cancel](#)

**brightcove STUDIO**

Media Library

- All Videos (5)
- Recently Uploaded (5)
- Playlists
  - All Playlists
  - Favorites
- Players
  - All Players

**All Videos**  
5 Videos [Show Selected \(1\)](#)

Search

	Video Name
<input checked="" type="checkbox"/>	BC Live Trial Stream Live Video
<input checked="" type="checkbox"/>	Test Video 0:27
<input checked="" type="checkbox"/>	widescreen 233 1:22
<input checked="" type="checkbox"/>	flawless_1080p 2:03

**Edit Video: Test Video For SDI**

Basic | Distribution | Availability | Logo Overlay | Video Files | Cue Points | **Custom Fields**

captioning 993 Characters Left

eng,fr,heb,spa,deu,ita,ita,nor

[Cancel](#) [Save Changes](#)



In order to add the ability to create, save & modify PLYs on your site, and with any integration related questions you might have, please contact our technical department:

PLYmedia Inc.

[Support@PLYmedia.com](mailto:Support@PLYmedia.com)